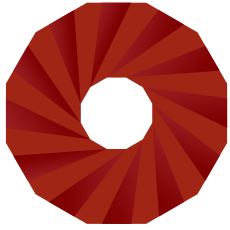


SEATING PLANS

Concert seating plans and capacity	2
Function – 140 Guests	3
Wedding – 130 Guests	4
Wedding – 120 Guests	5
Wedding – 108 Guests	6
Wedding – 91 Guests	7
Banquet Set Up – 90 Guests	8
Garden Terrace Banquet Style – 34 Guests	9
Garden Terrace Boardroom Set Up – 20 Guests	10
Garden Terrace Boardroom Set Up – 30 Guests	11
Wedding Garden Terrace – 109 Guests	12
Wedding Garden Terrace – 123 Guests	13
Garden Terrace – 100 guests	14
Garden Terrace – 98 guests	15



UKARIA
Cultural Centre



UKARIA
Cultural Centre

CONCERT SEATING CAPACITY AND AREAS

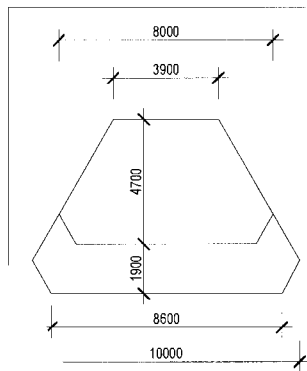
SEATING TOTAL 218

MAIN AREA - LOWER LEVEL 137

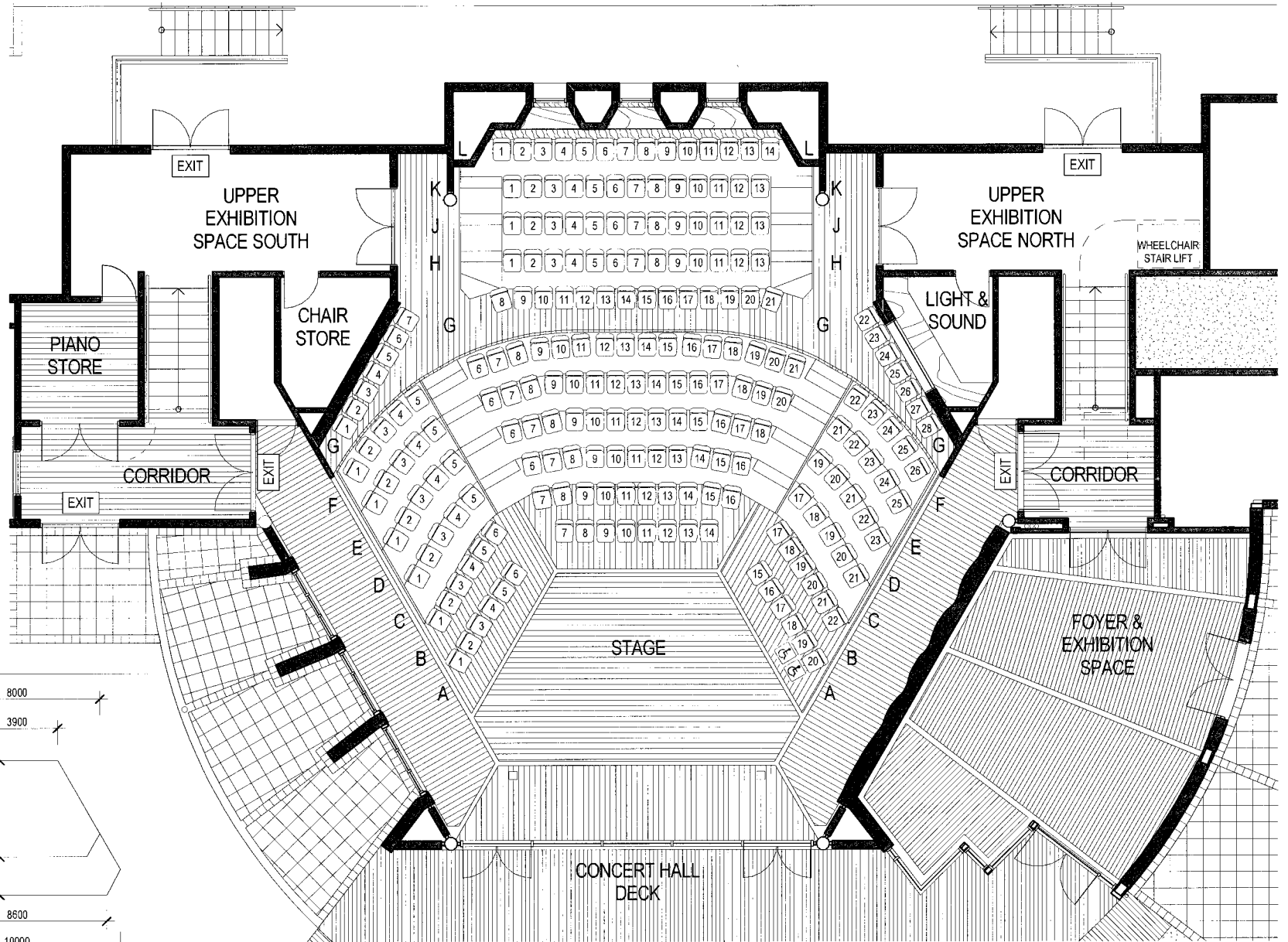
- ROW A 20
- ROW B 22
- ROW C 21
- ROW D 23
- ROW E 25
- ROW F 26

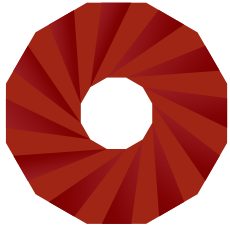
UPPER LEVEL 81

- ROW G 28
- ROW H 13
- ROW J 13
- ROW K 13
- ROW L 14



STAGE DIMENSIONS



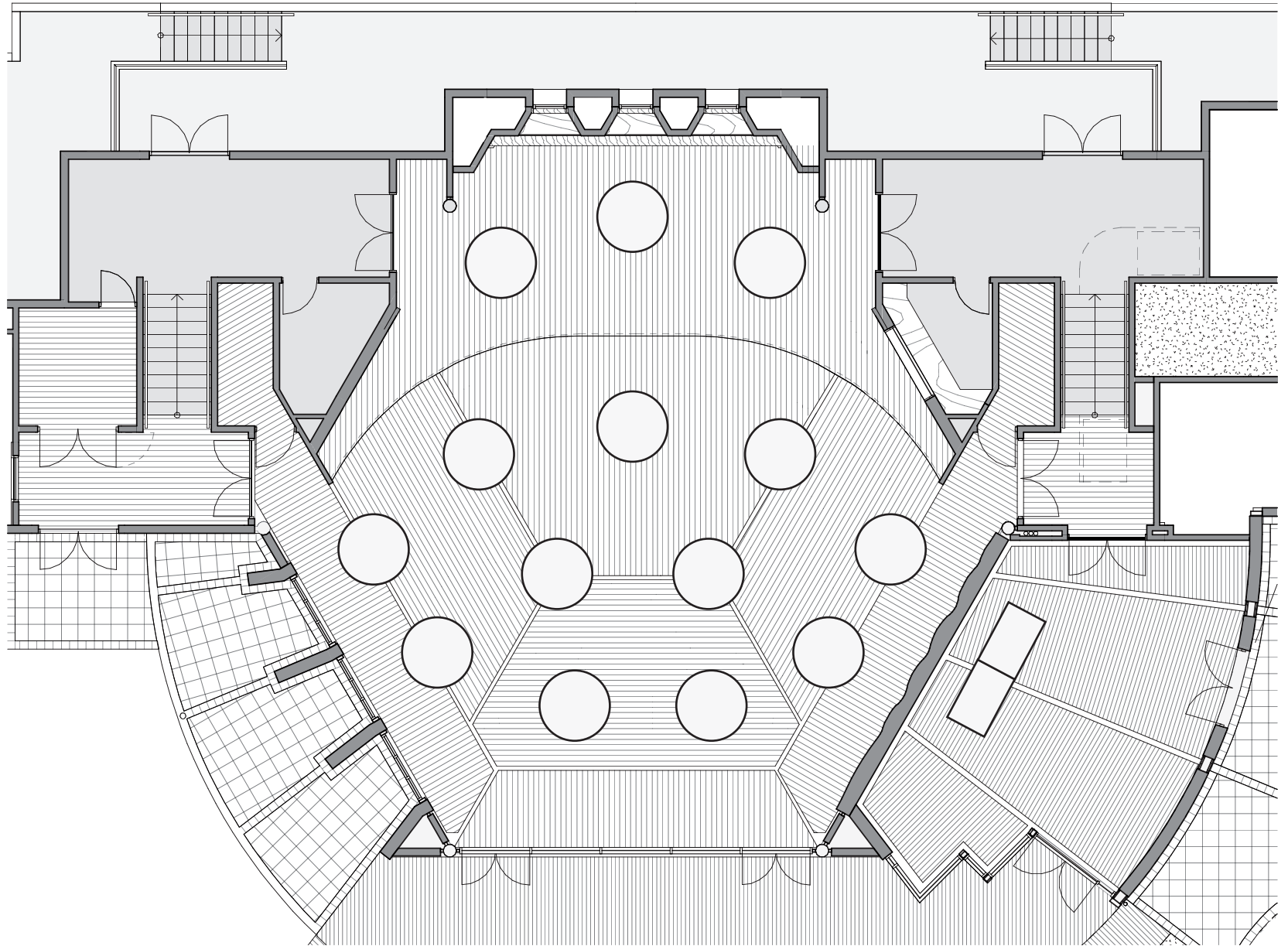


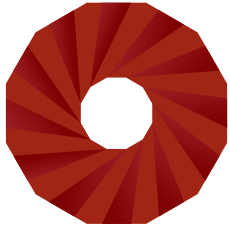
UKARIA

Cultural Centre

FUNCTION – 140 GUESTS
TWO LEVELS OF FLAT
FLOOR SET UP WITH
ROUND DINING TABLES

14 tables x 10 PAX | **140 guests**
DANCEFLOOR (on Deck) 4.8m x 3.6m





UKARIA

Cultural Centre

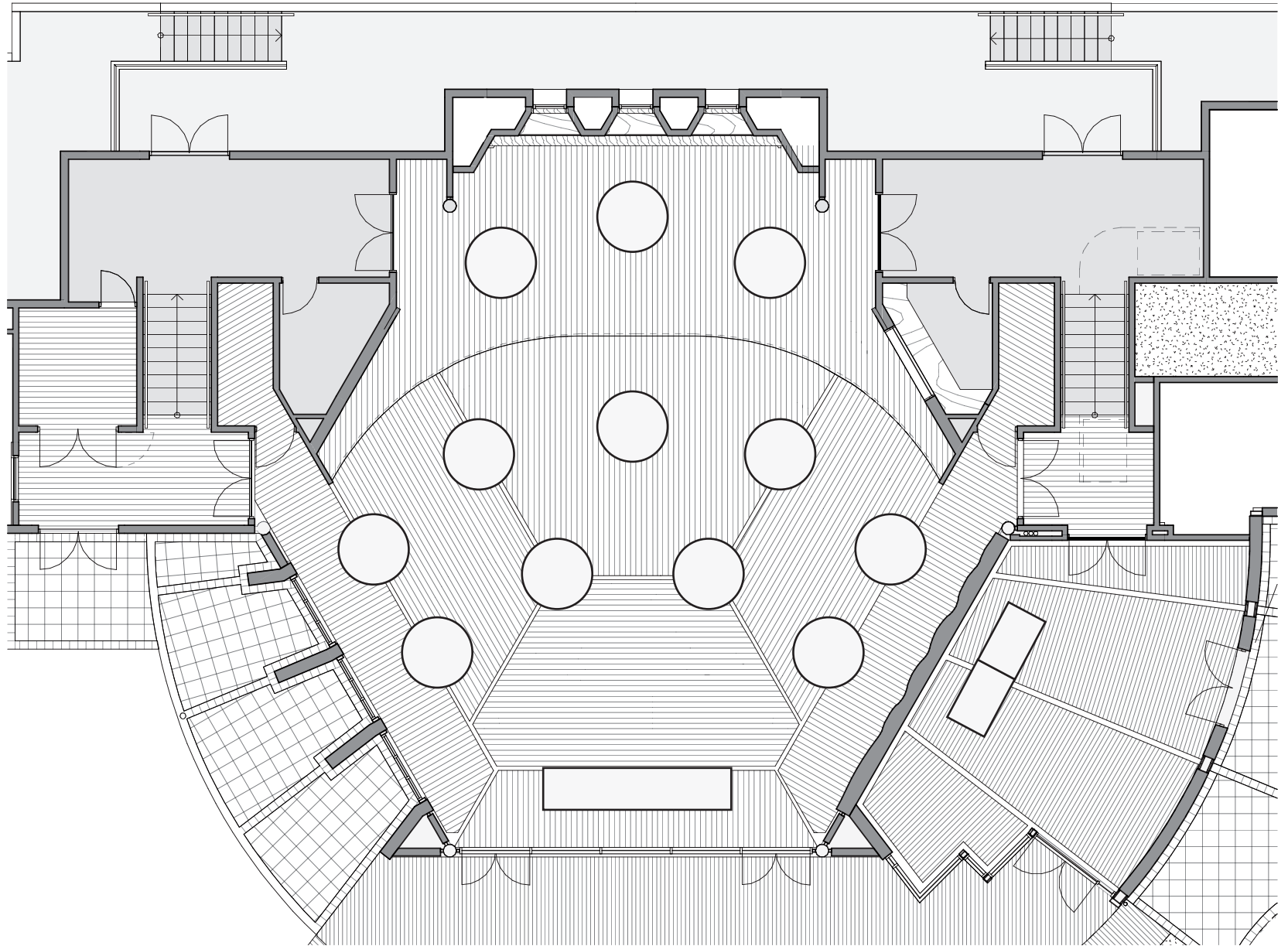
WEDDING – 130 GUESTS

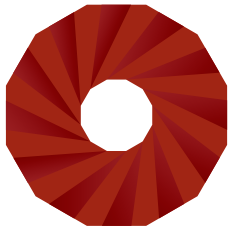
TWO LEVELS OF FLAT FLOOR SET UP WITH ROUND DINING TABLES AND HEAD TABLE FOR BRIDAL PARTY

12 TABLES x 10 PAX | 120 guests

HEAD TABLE | 10 guests

DANCEFLOOR (on Deck) 4.8m x 3.6m



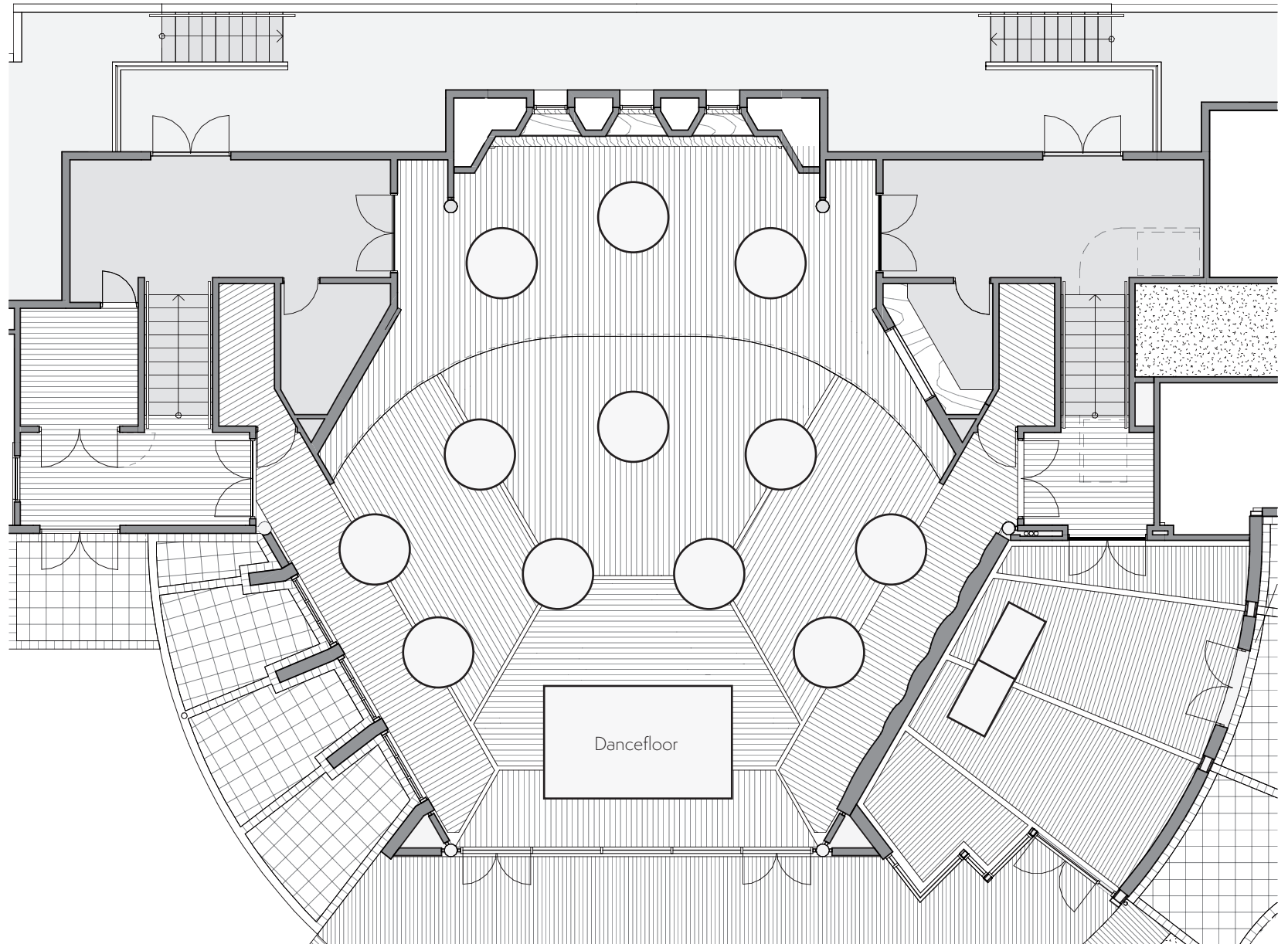


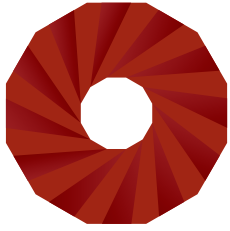
UKARIA
Cultural Centre

WEDDING/FUNCTION
– 120 GUESTS

TWO LEVELS OF FLAT
FLOOR SET UP WITH
ROUND DINING TABLES
(NO HEAD TABLE FOR BRIDAL PARTY)

12 TABLES x 10 PAX | 120 guests
DANCEFLOOR 4.8m x 3.6m (Large)





UKARIA

Cultural Centre

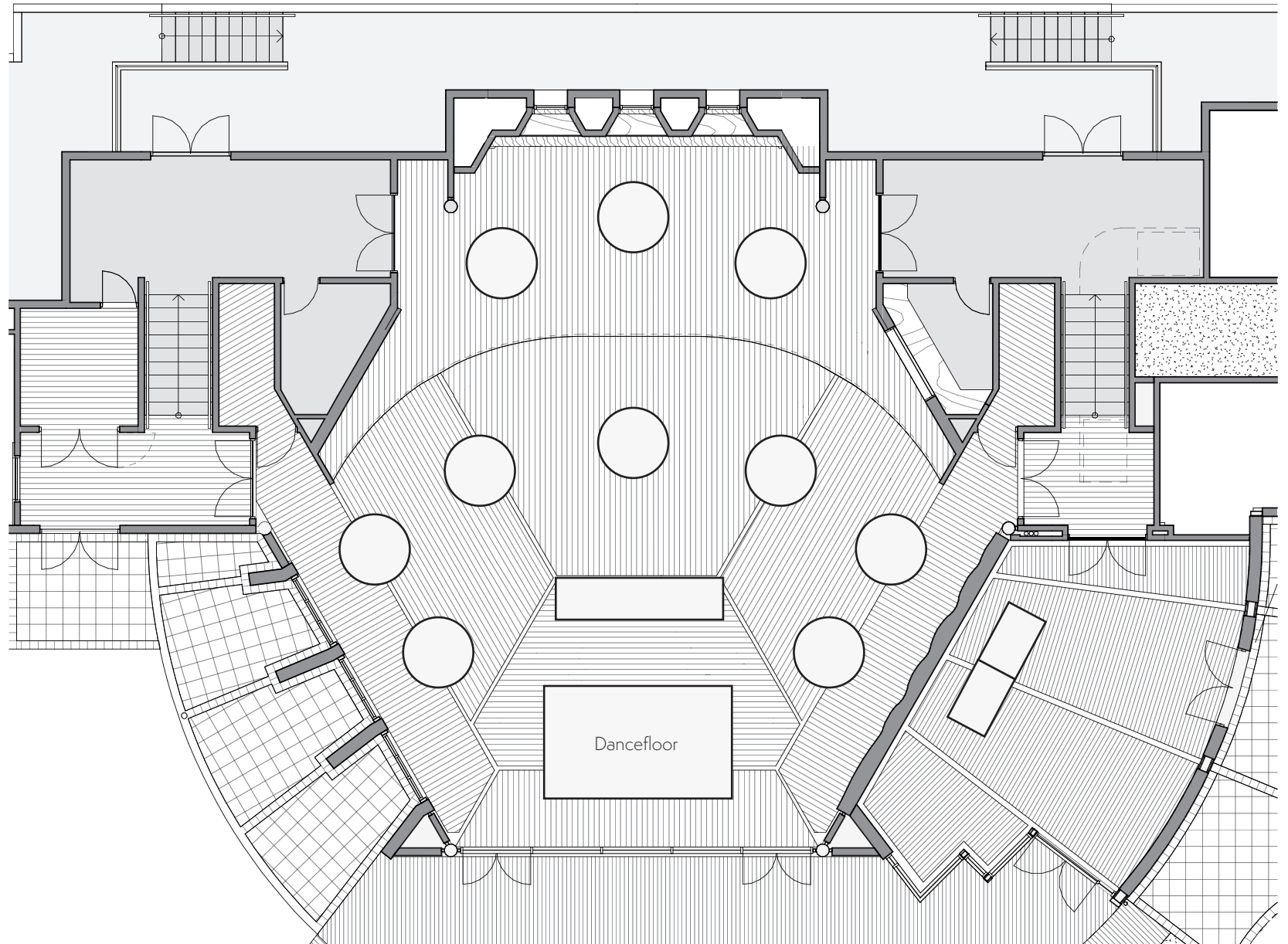
WEDDING – 108 GUESTS

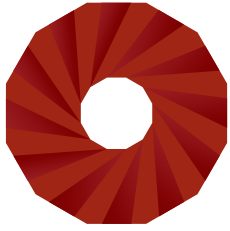
TWO LEVELS OF FLAT FLOOR SET UP WITH ROUND DINING TABLES AND HEAD TABLE FOR BRIDAL PARTY

10 TABLES x 10 PAX | 100 guests

HEAD TABLE | 8 guests

DANCEFLOOR 4.8m x 3.6m (Large)





UKARIA

Cultural Centre

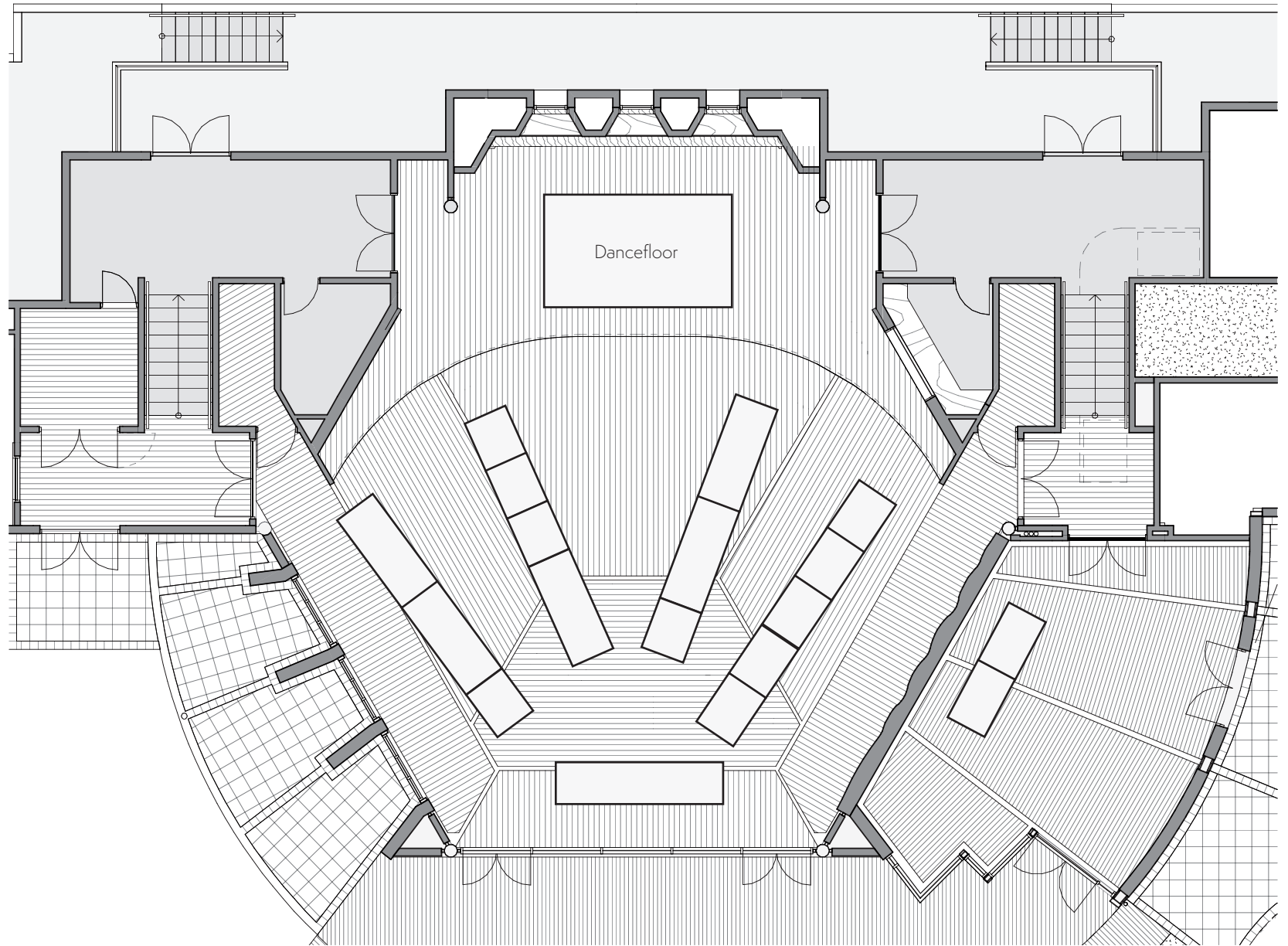
WEDDING – 91 GUESTS

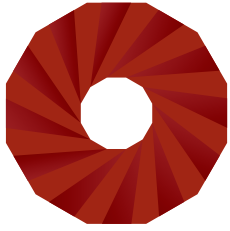
TWO LEVELS OF FLAT FLOOR SET UP WITH LONG DINING TABLES AND HEAD TABLE FOR BRIDAL PARTY

4 LONG TABLES | 83 guests

HEAD TABLE | 8 guests

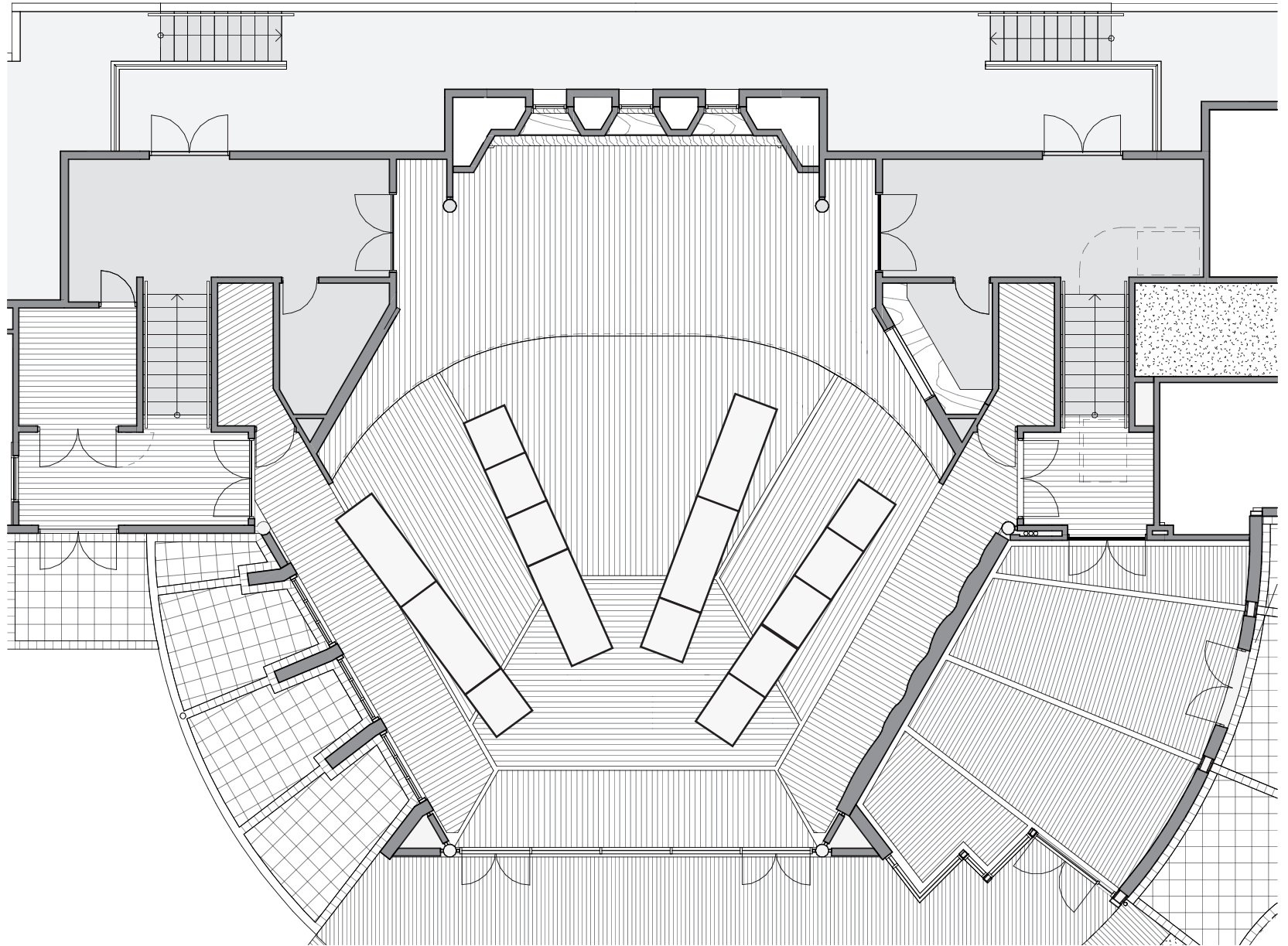
DANCEFLOOR
(Upstairs) 4.8m x 3.6m (Large)

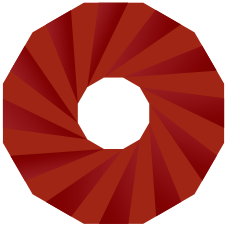




UKARIA
Cultural Centre

BANQUET SET UP
– 90 GUESTS





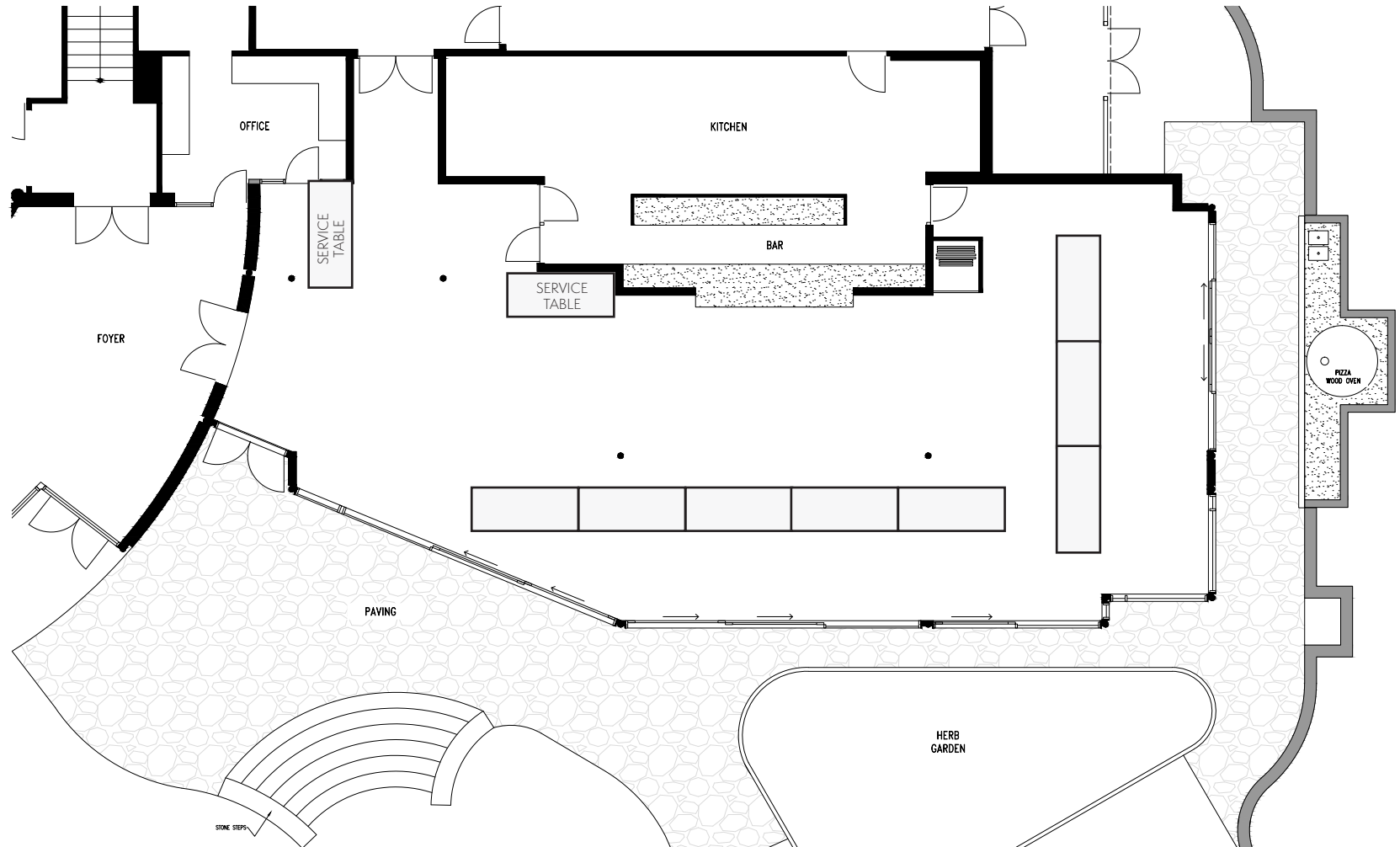
UKARIA
Cultural Centre

GARDEN TERRACE
DINING L SHAPE SET UP

68 Guests total

1 long table | **26 Guests**

1 long table | **42 Guests**

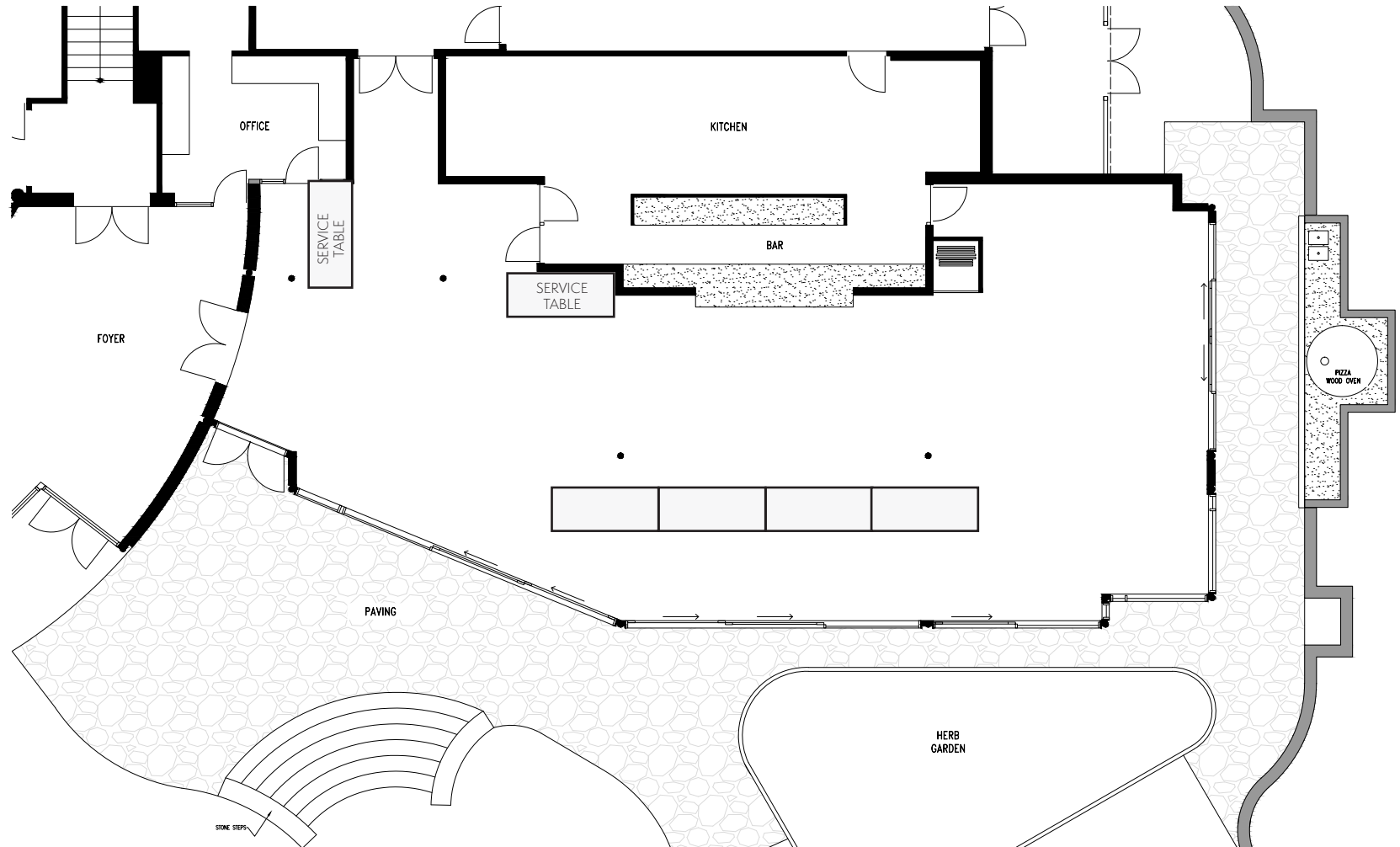


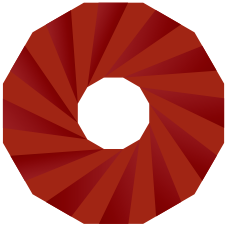


UKARIA
Cultural Centre

GARDEN TERRACE
ONE LONG TABLE
BANQUET STYLE

34 Guests total

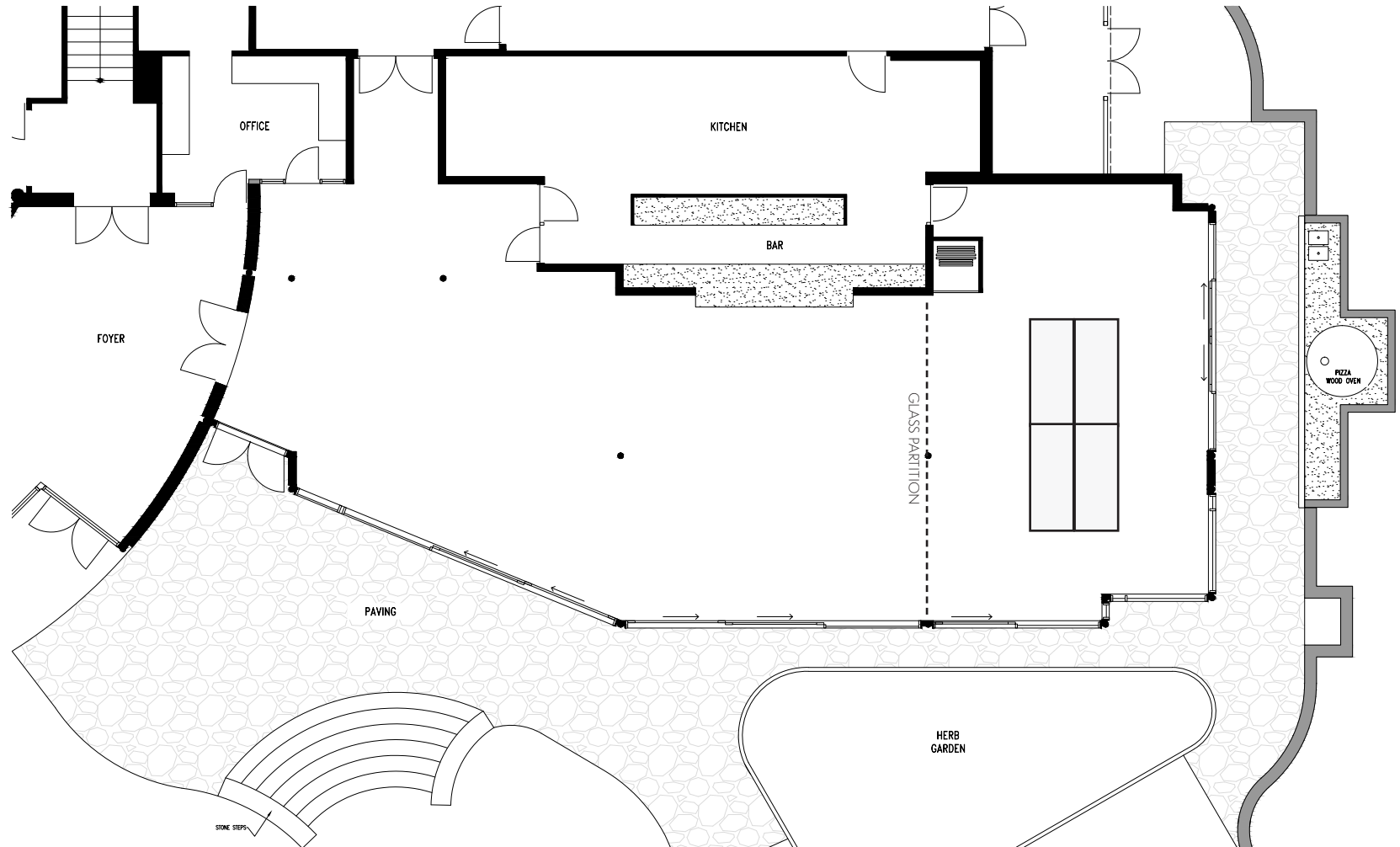


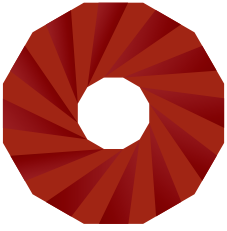


UKARIA
Cultural Centre

GARDEN TERRACE
NORTHERN AREA
BOARDROOM SET UP

20 Guests total

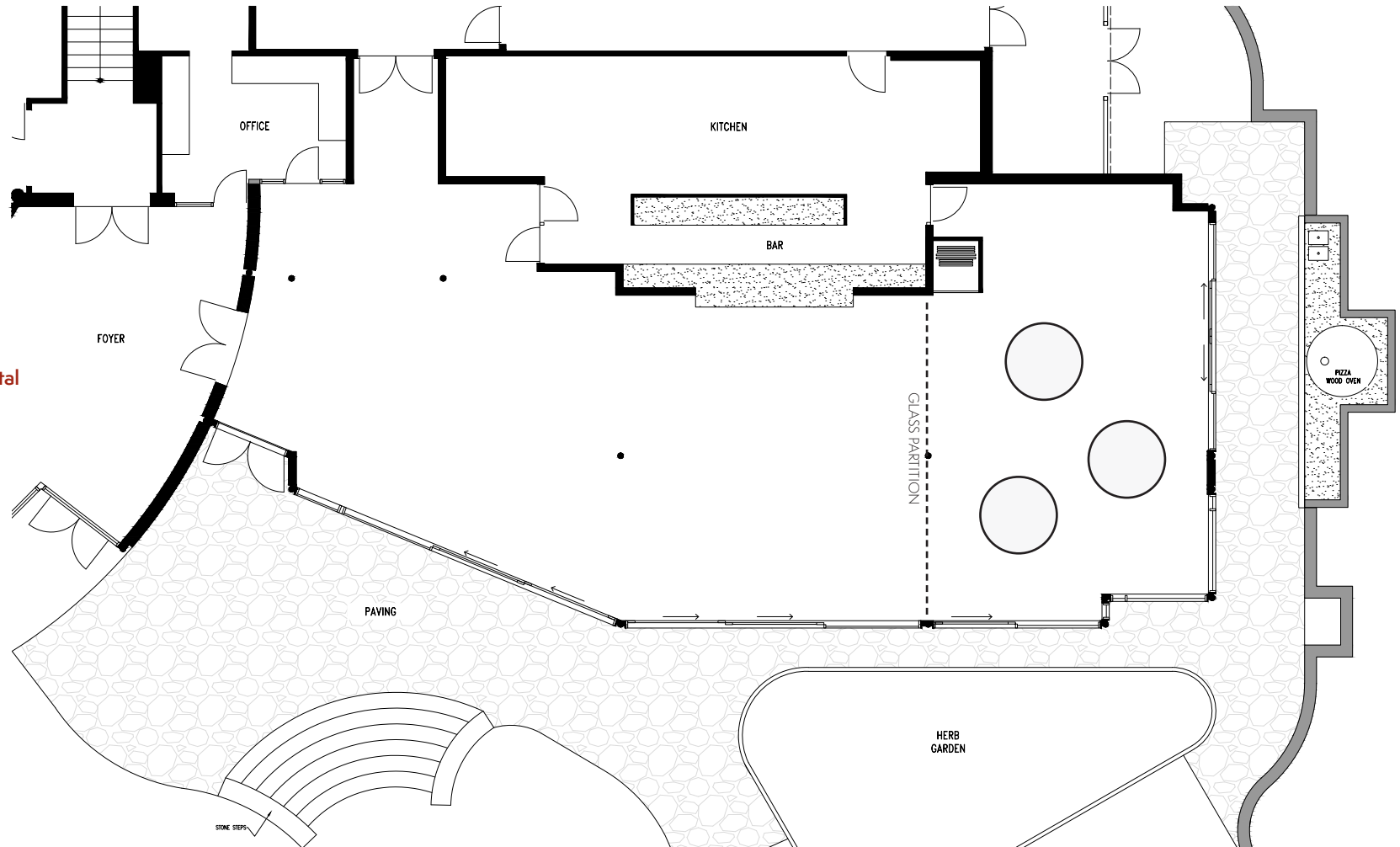


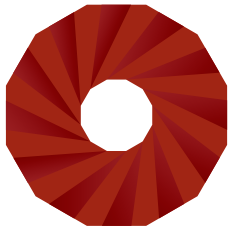


UKARIA
Cultural Centre

GARDEN TERRACE
NORTHERN AREA
BOARDROOM SET UP

3 round tables x 10 PAX | 30 Guests total





UKARIA
Cultural Centre

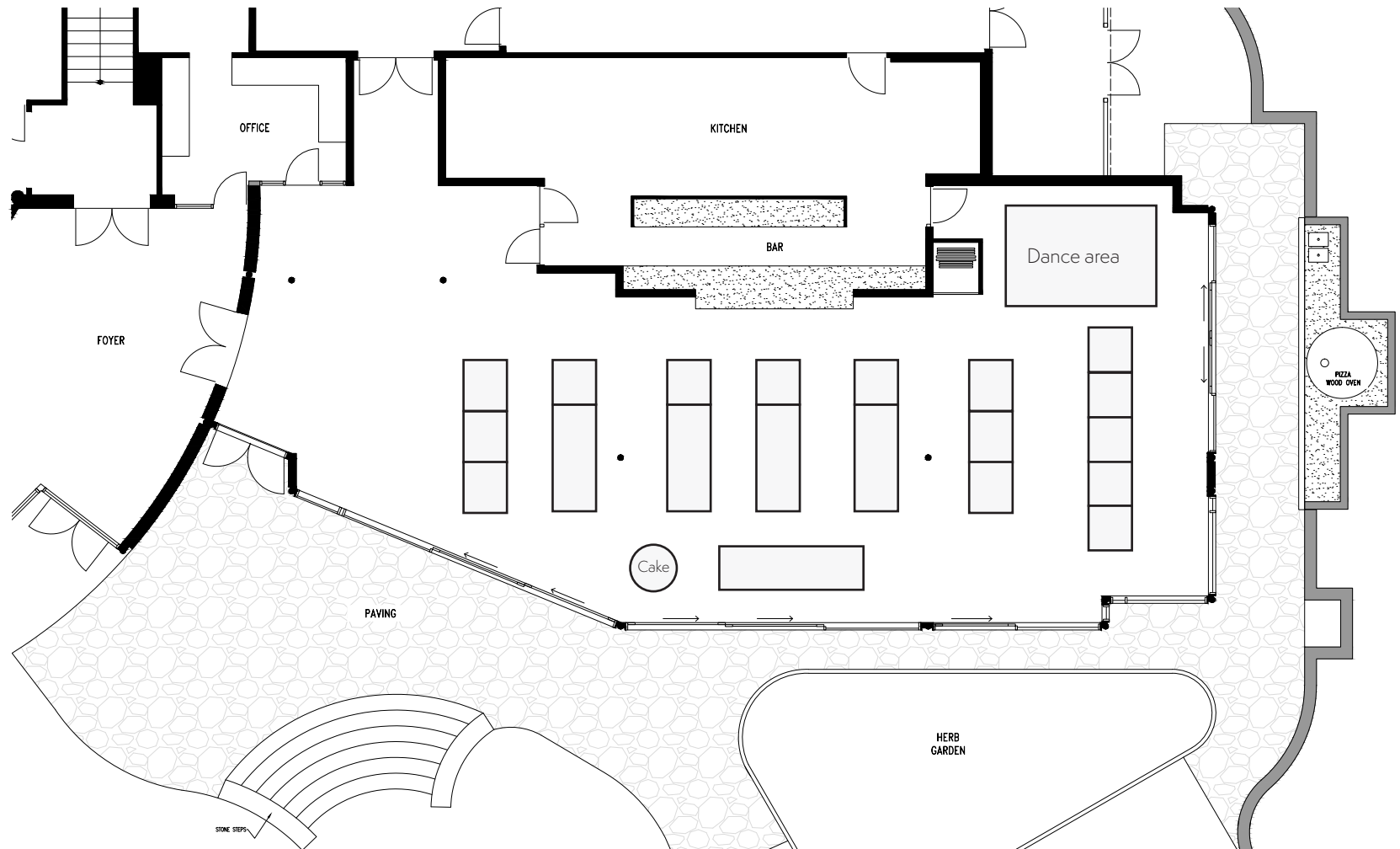
WEDDING – 109 GUESTS

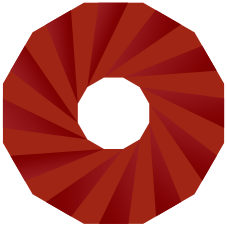
GARDEN TERRACE
WOOD LOOK

LONG DINING TABLES
AND HEAD TABLE FOR
BRIDAL PARTY

7 LONG TABLES | 101 guests

HEAD TABLE | 8 guests





UKARIA
Cultural Centre

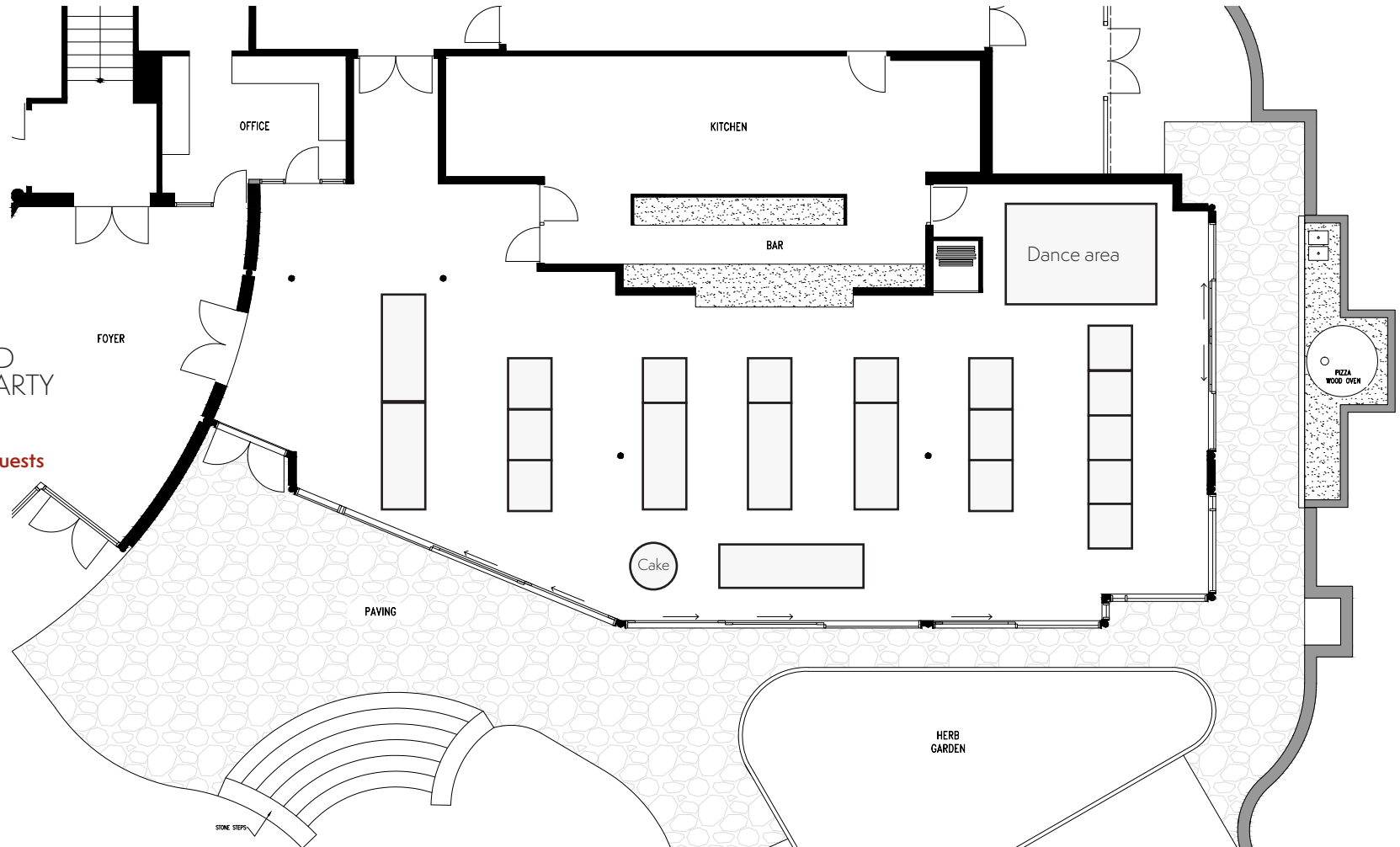
WEDDING – 123 GUESTS

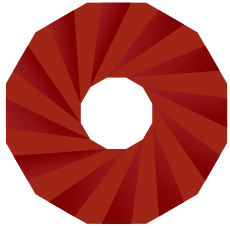
GARDEN TERRACE
CLOTHS LOOK

LONG DINING TABLES AND
HEAD TABLE FOR BRIDAL PARTY

8 LONG TABLES (WITH ENDS) | 115 guests

HEAD TABLE | 8 guests



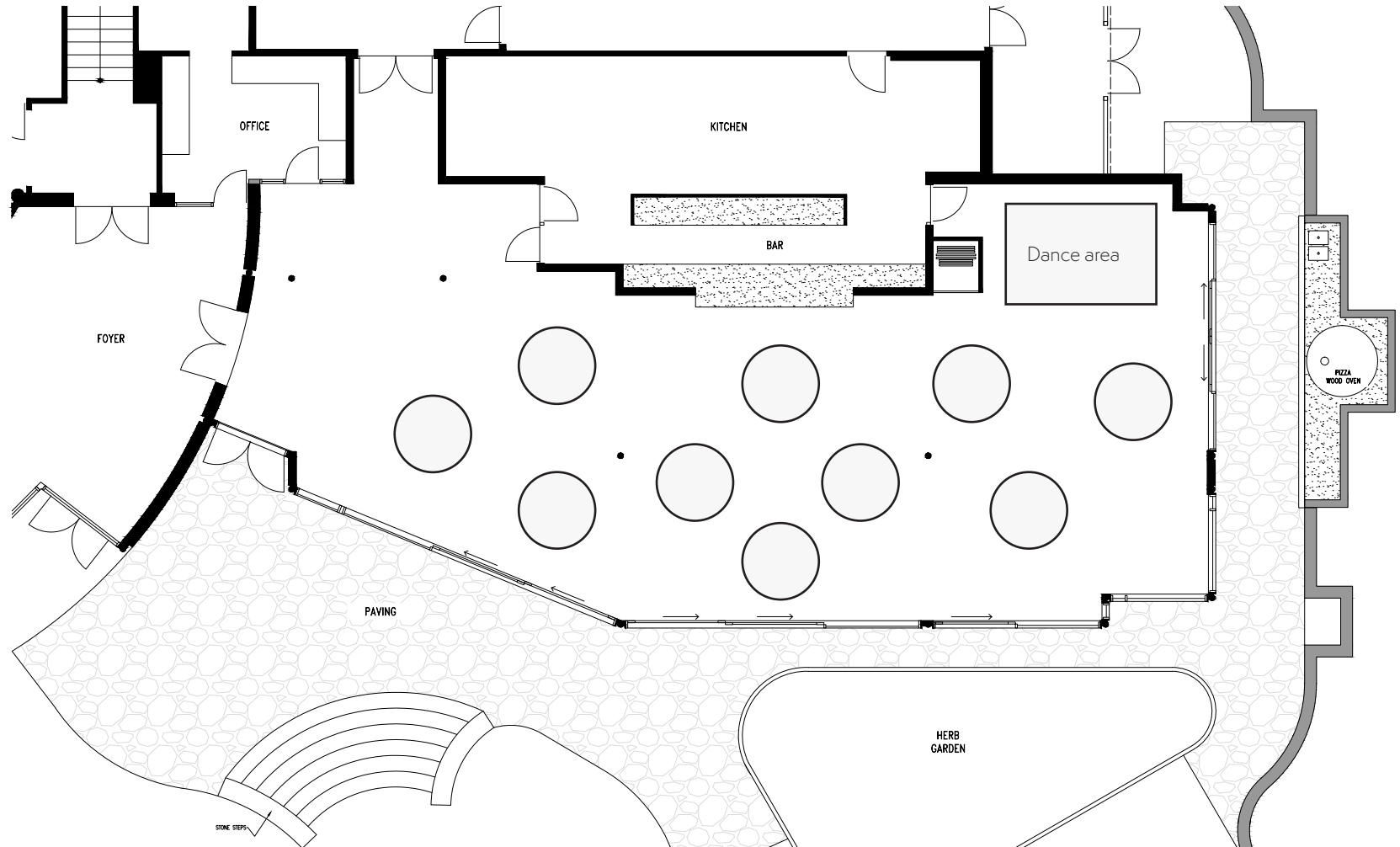


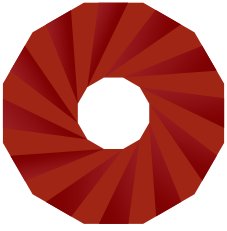
UKARIA
Cultural Centre

GARDEN TERRACE
– 100 GUESTS

DINING WITH
ROUND TABLES

10 ROUND TABLES | 100 guests





UKARIA
Cultural Centre

GARDEN TERRACE
– 98 GUESTS

DINING WITH ROUND
TABLES AND HEAD TABLE
FOR BRIDAL PARTY

9 ROUND TABLES | 90 guests
HEAD TABLE | 8 guests

